



Office Building

FOR SALE

2156 THE ALAMEDA, SAN JOSE CA 95126

PROPERTY HIGHLIGHTS:

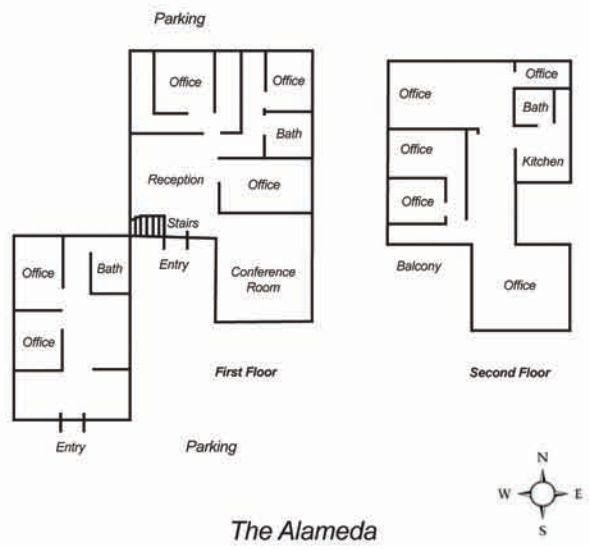
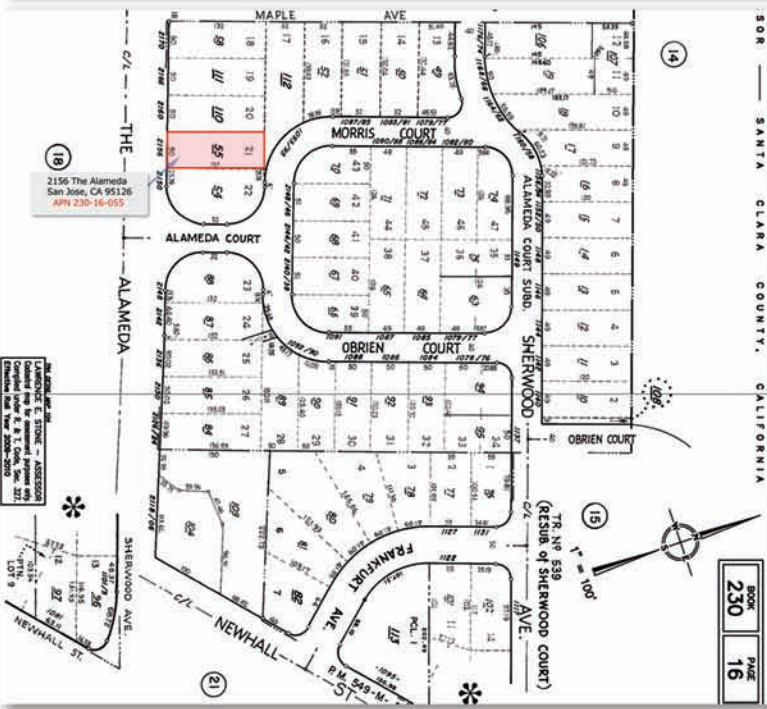
- * Charming 2-story office building on a nice area of a major corridor in San Jose
- * Zoned commercial for any professional office use (legal, insurance, real estate, accounting, business etc...)
- * Parking spaces in front of the building. Street parking also available.
- * Excellent street visibility
- * Near Fwy 880; San Jose International Airport and downtown San Jose

Parcel Number: 230-16-055
 Zone: Commercial (professional building)
 Building size: 3,395SF
 Number of stories: 2
 Built: 1925
 Lot size: 6,534SF

Asking: \$1,250,000



FLOOR PLAN
(NOT TO SCALE)



CONTACT INFORMATION:

Michael Minh Nguyen
 LIC#01298812
 michael@skybridgecommercial.com
 Tel: (408)595-7557

Colleen Pham
 LIC# 01333583
 colleen@skybridgecommercial.com
 Tel: (408)595-9609



800 W El Camino Real, Ste 180 Mountain View, CA 94040 - www.skybridgecommercial.com

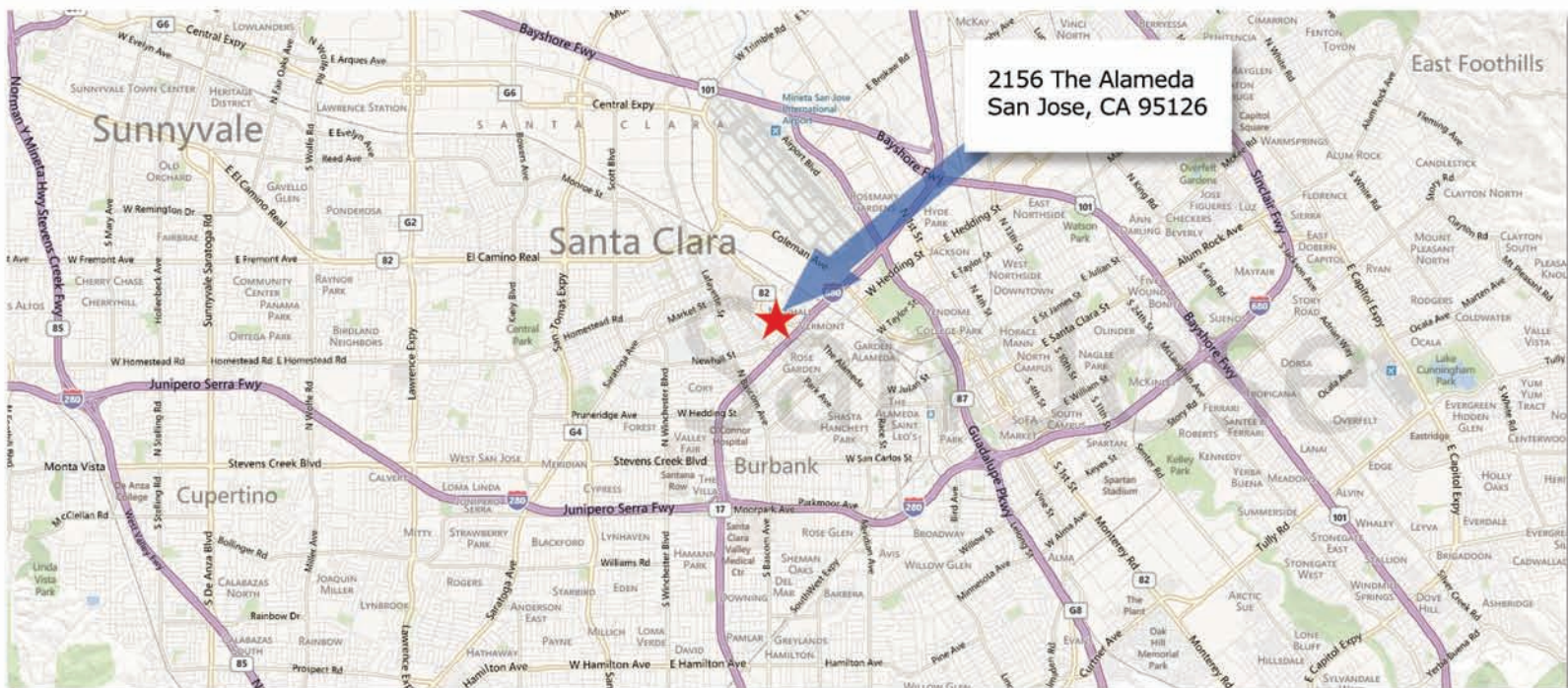
Disclosure: This information has been secured from sources we believe to be reliable, but Skybridge Commercial makes no representations or warranties, expressed or implied, as to the accuracy of the information. Buyers must verify all information and conduct its own due diligence to its satisfaction.



Office Building

FOR SALE

2156 THE ALAMEDA, SAN JOSE CA 95126



2156 The Alameda
San Jose, CA 95126



CONTACT INFORMATION:

Michael Minh Nguyen
LIC#01298812
michael@skybridgecommercial.com
Tel: (408)595-7557

Colleen Pham
LIC# 01333583
colleen@skybridgecommercial.com
Tel: (408)595-9609



800 W El Camino Real, Ste 180 Mountain View, CA 94040 - www.skybridgecommercial.com

Disclosure: This information has been secured from sources we believe to be reliable, but Skybridge Commercial makes no representations or warranties, expressed or implied, as to the accuracy of the information. Buyers must verify all information and conduct its own due diligence to its satisfaction.